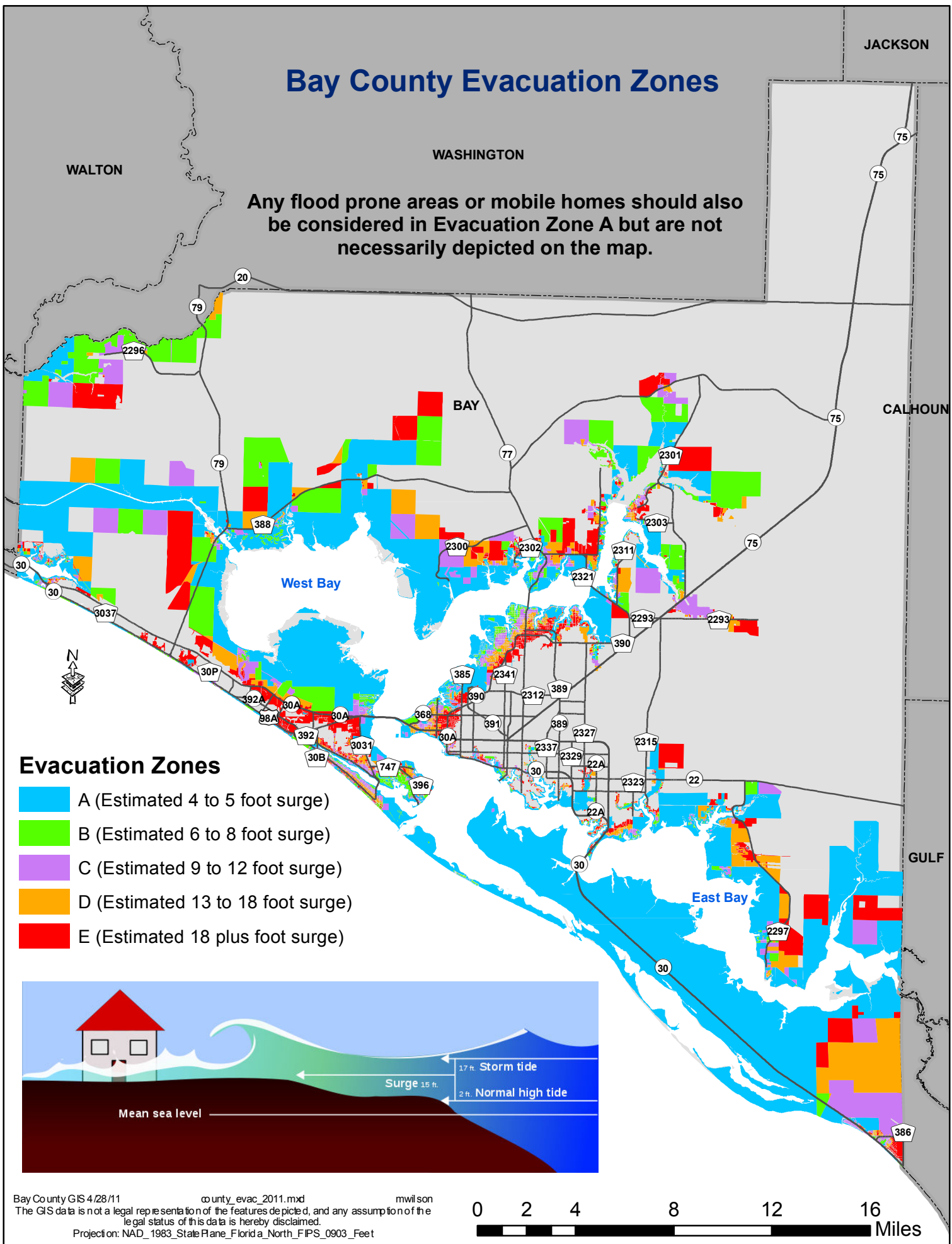


# Bay County Evacuation Zones

Any flood prone areas or mobile homes should also be considered in Evacuation Zone A but are not necessarily depicted on the map.



## Evacuation Zones

- A (Estimated 4 to 5 foot surge)
- B (Estimated 6 to 8 foot surge)
- C (Estimated 9 to 12 foot surge)
- D (Estimated 13 to 18 foot surge)
- E (Estimated 18 plus foot surge)

